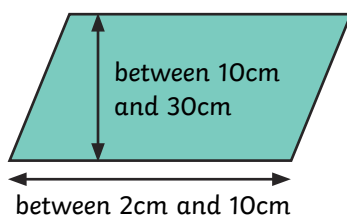




Use the formula **base \times height** to calculate the area of a parallelogram.

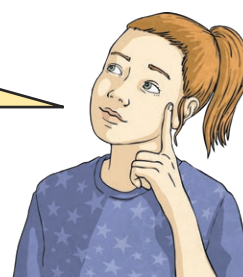
- 1) I am thinking of a parallelogram with side lengths that are whole numbers.



It has an area of 84cm^2 .

Its height measures between 10cm and 30cm.

Its base measures between 2cm and 10cm.



Give the dimensions of all the possible parallelograms I could be thinking of.

- 2) DIY Dan is decorating his bathroom with these tiles:



One wall of his bathroom has an area of 4800cm^2 .

- a) How many tiles will DIY Dan need to decorate this wall?

- b) DIY Dan spends another £175 decorating the rest of his bathroom with tiles. How many more tiles did DIY Dan use?
